



PREMIUM LOCATION | ROYAL LIFESTYLE | SPACES






Manglam's
RADIANCE
 ROYAL RESIDENCES

Plot No. 1 Airport Plaza Scheme,
 Near Hotel Fern, Durgapura,
 Tonk Road, Jaipur

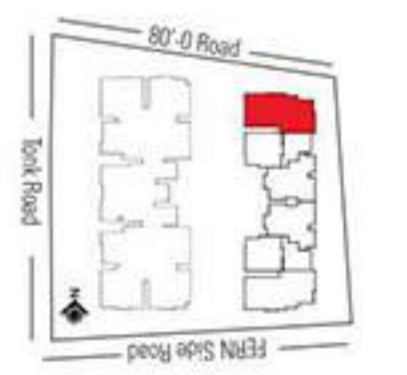
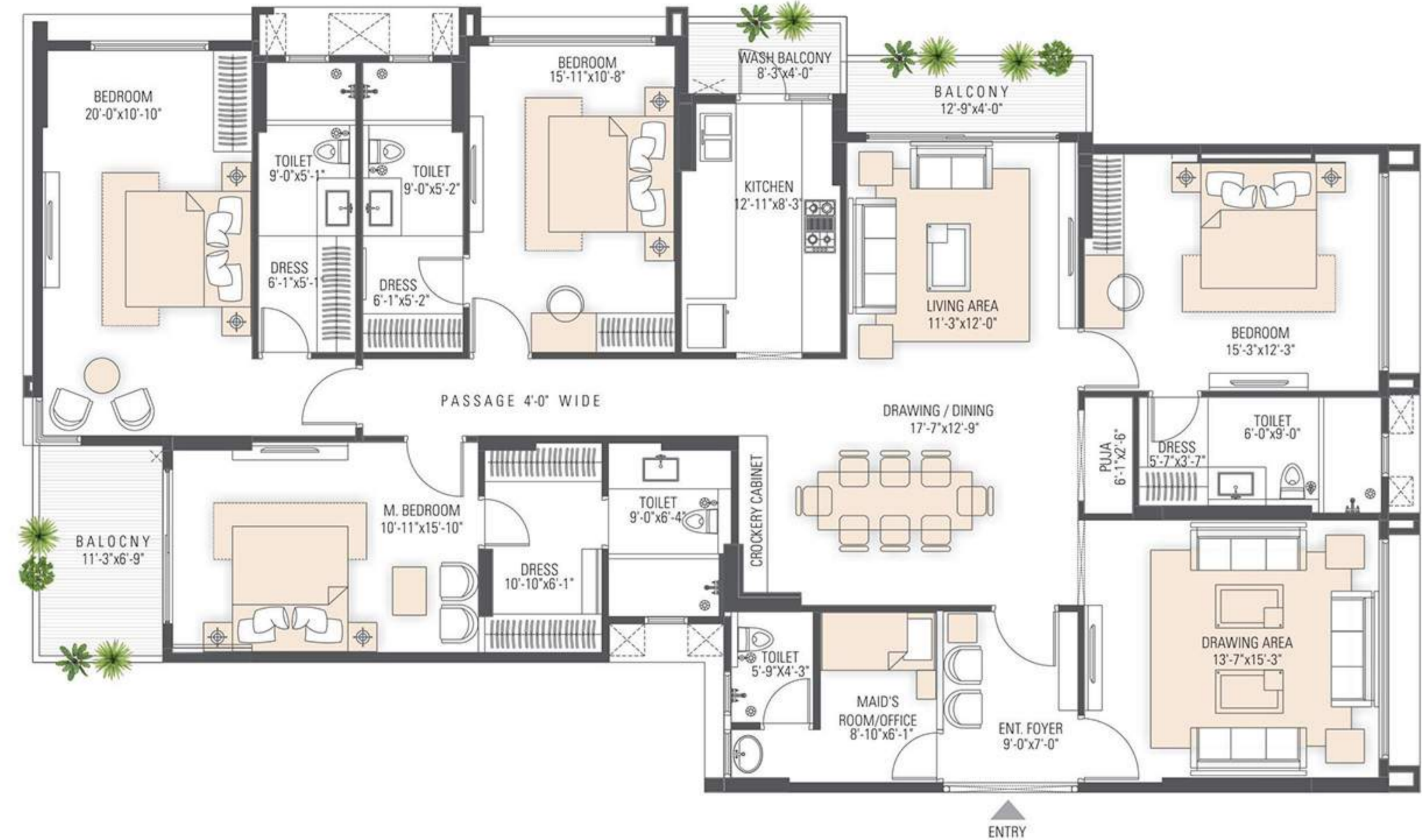
LUXURY
 ROYAL LIVING
 IN THE HEART
 OF THE CITY

KEY FLOOR PLAN
SBUA-25% = BUA



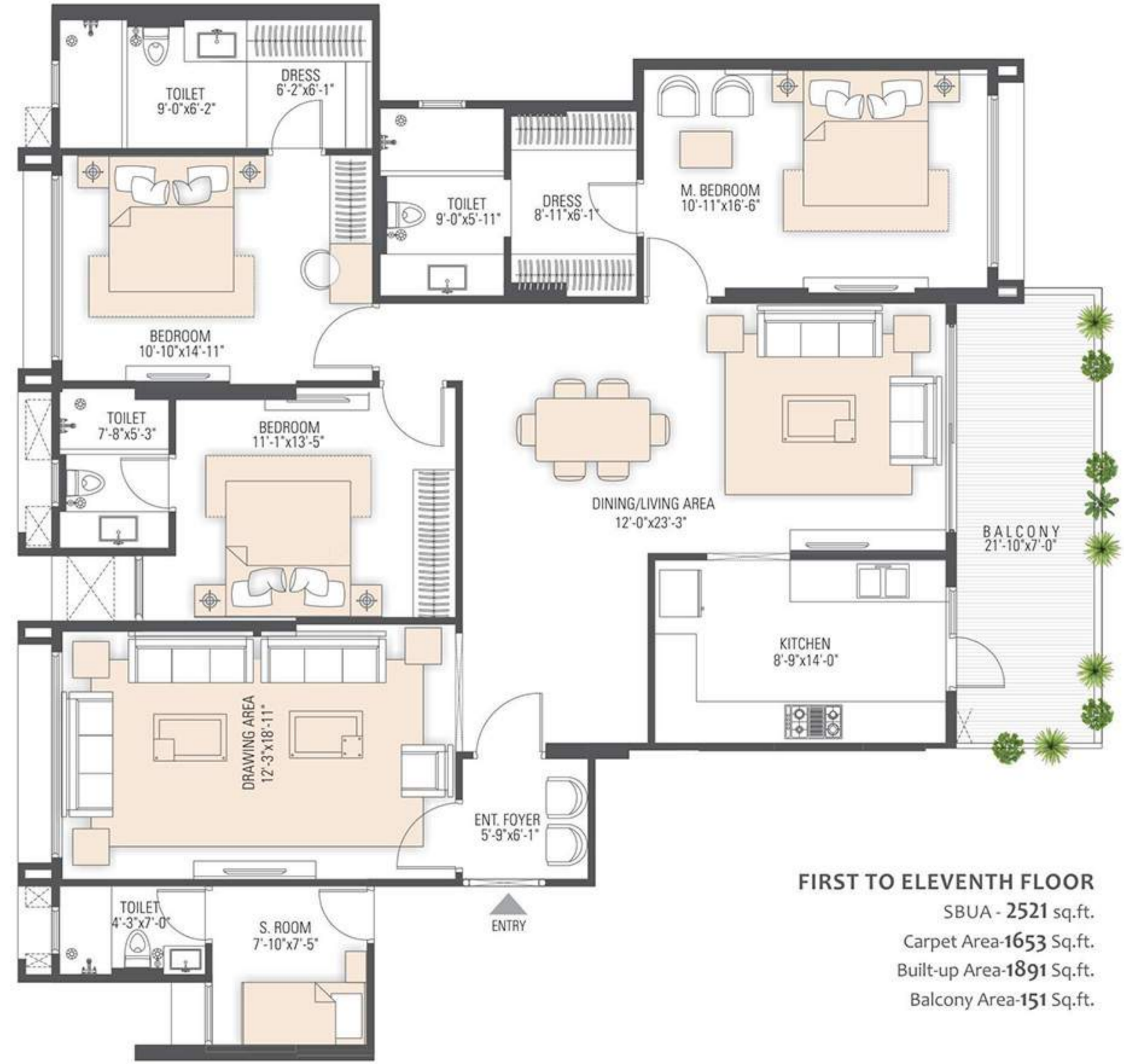
KEY FLOOR PLAN
12 to 17





FIRST TO ELEVENTH FLOOR
 SBUA - 3207 sq.ft.
 Carpet Area- 2133 Sq.ft.
 Built-up Area- 2405 Sq.ft.
 Balcony Area-160 Sq.ft.

3 BHK - BLOCK A



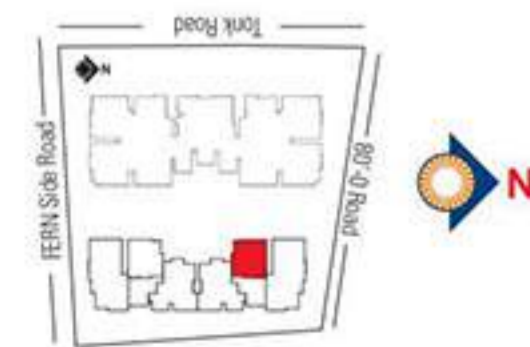
FIRST TO ELEVENTH FLOOR
 SBUA - 2521 sq.ft.
 Carpet Area-1653 Sq.ft.
 Built-up Area-1891 Sq.ft.
 Balcony Area-151 Sq.ft.

4 BHK - BLOCK A

FIRST TO NINTH FLOOR

SBUA - 1637 sq.ft.
Carpet Area- 1029 Sq.ft.
Built-up Area- 1228 Sq.ft.
Balcony Area-132 Sq.ft.

2 BHK - BLOCK A

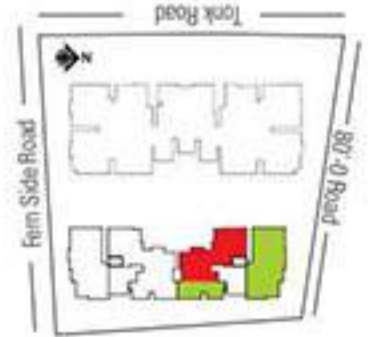


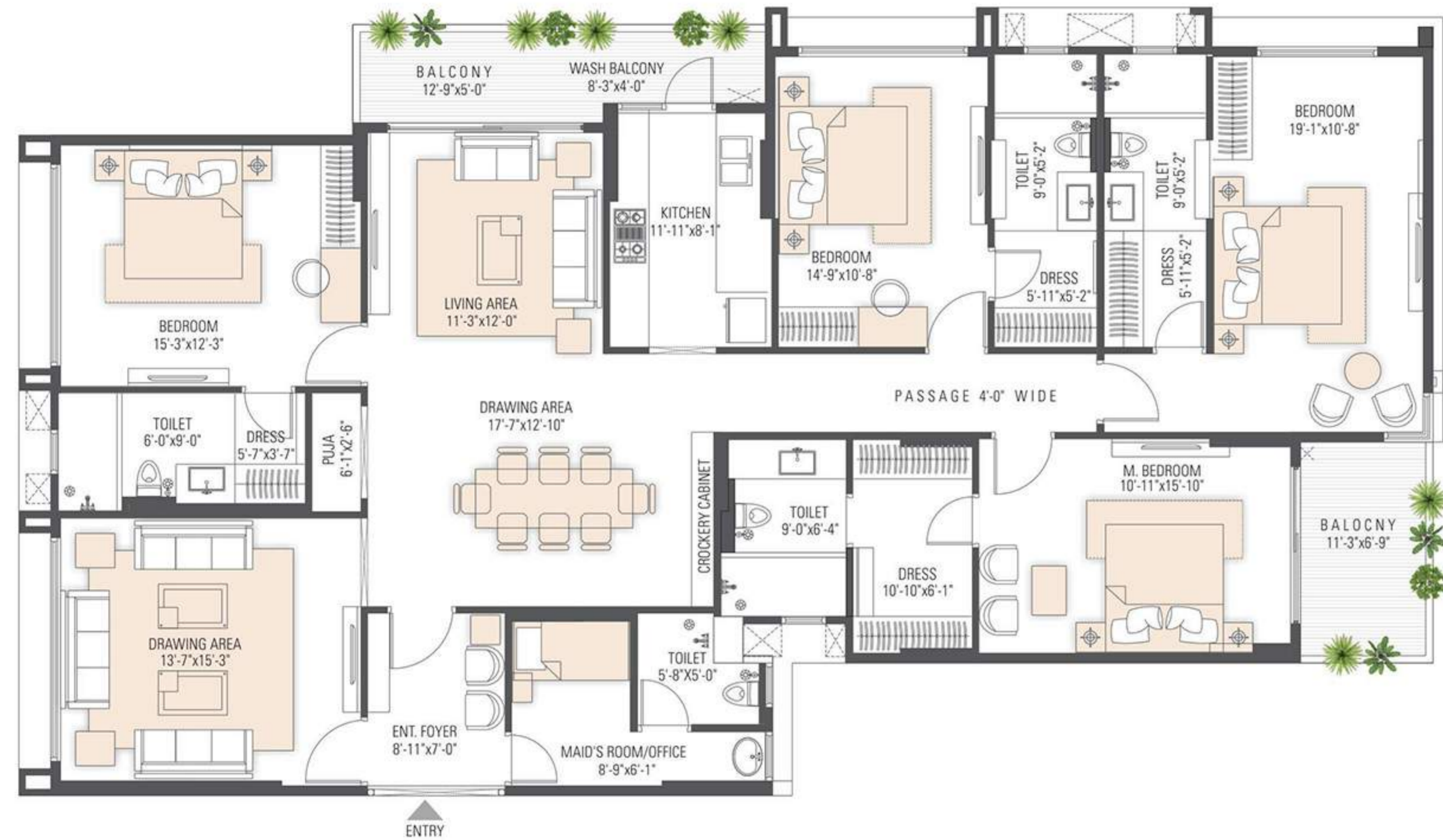
TWELFTH TO SEVENTEENTH FLOOR

SBUA - 3122 sq.ft.
Carpet Area- 1968 Sq.ft.
Built-up Area- 2341 Sq.ft.
Balcony Area-219 Sq.ft.
TERRACE AREA 3606 Sq.ft. (on Twelfth Floor)



4 BHK - BLOCK A





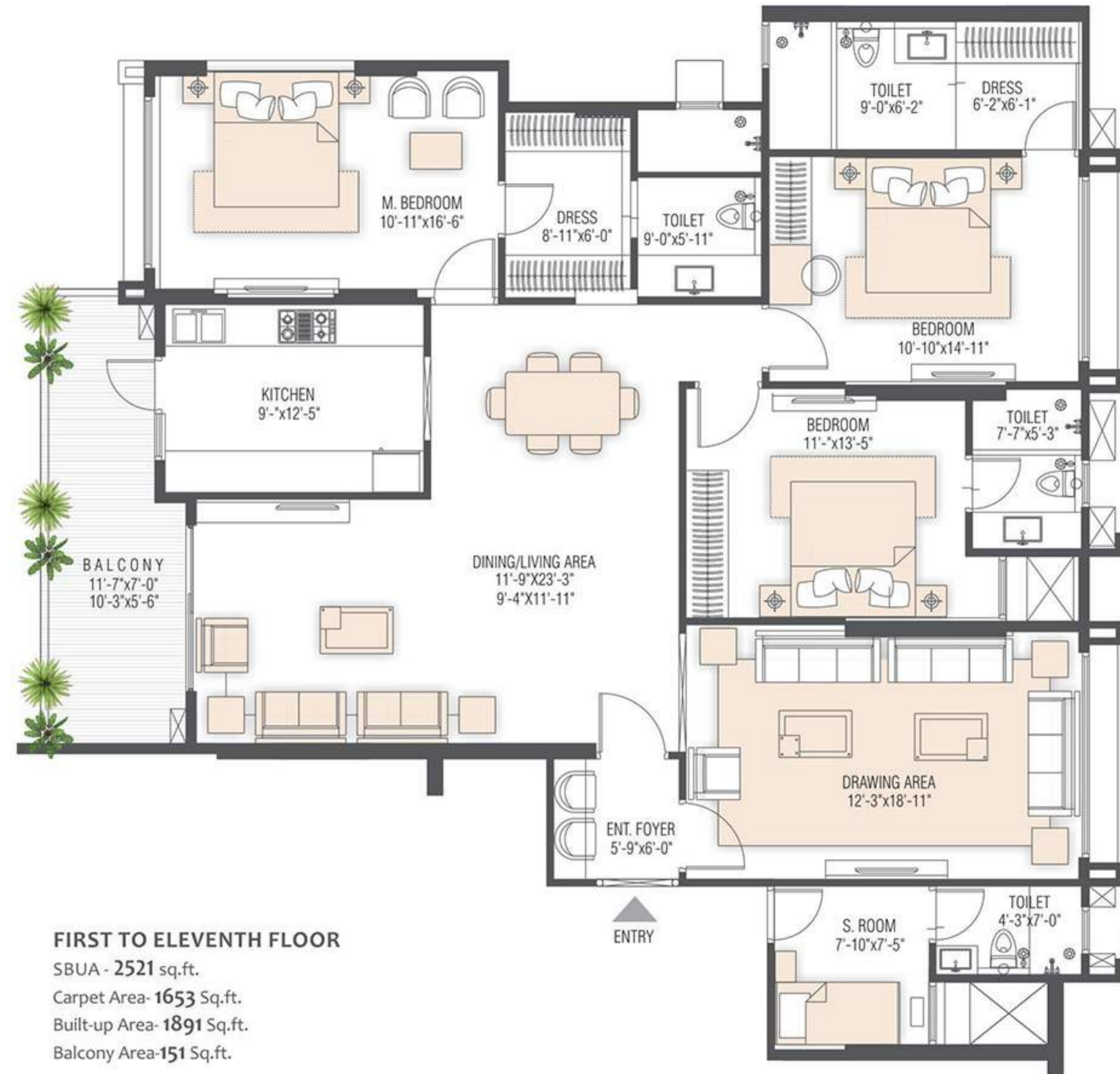
FIRST TO ELEVENTH FLOOR

SBUA - 3203 sq.ft.
 Carpet Area- 2115 Sq.ft.
 Built-up Area- 2402 Sq.ft.
 Balcony Area-173 Sq.ft.

4 BHK - BLOCK B



3 BHK - BLOCK B



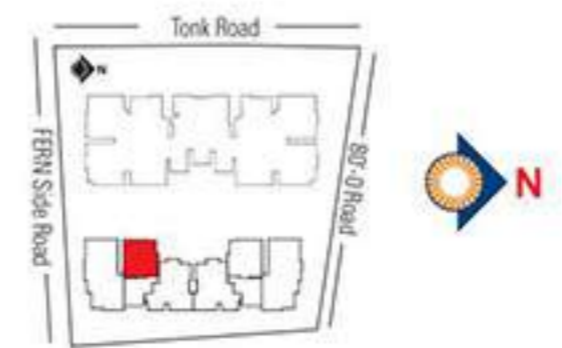
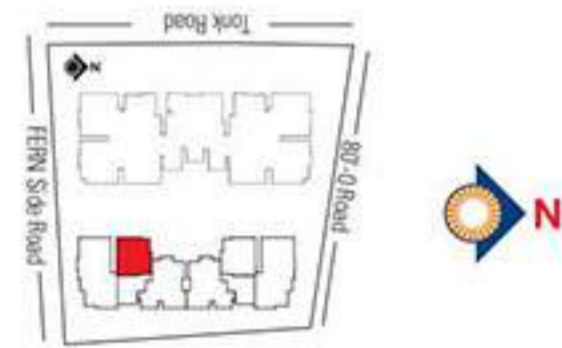
FIRST TO ELEVENTH FLOOR

SBUA - 2521 sq.ft.
 Carpet Area- 1653 Sq.ft.
 Built-up Area- 1891 Sq.ft.
 Balcony Area-151 Sq.ft.

FIRST TO NINTH FLOOR

SBUA - 1637 sq.ft.
Carpet Area- 1029 Sq.ft.
Built-up Area- 1228 Sq.ft.
Balcony Area-132 Sq.ft.

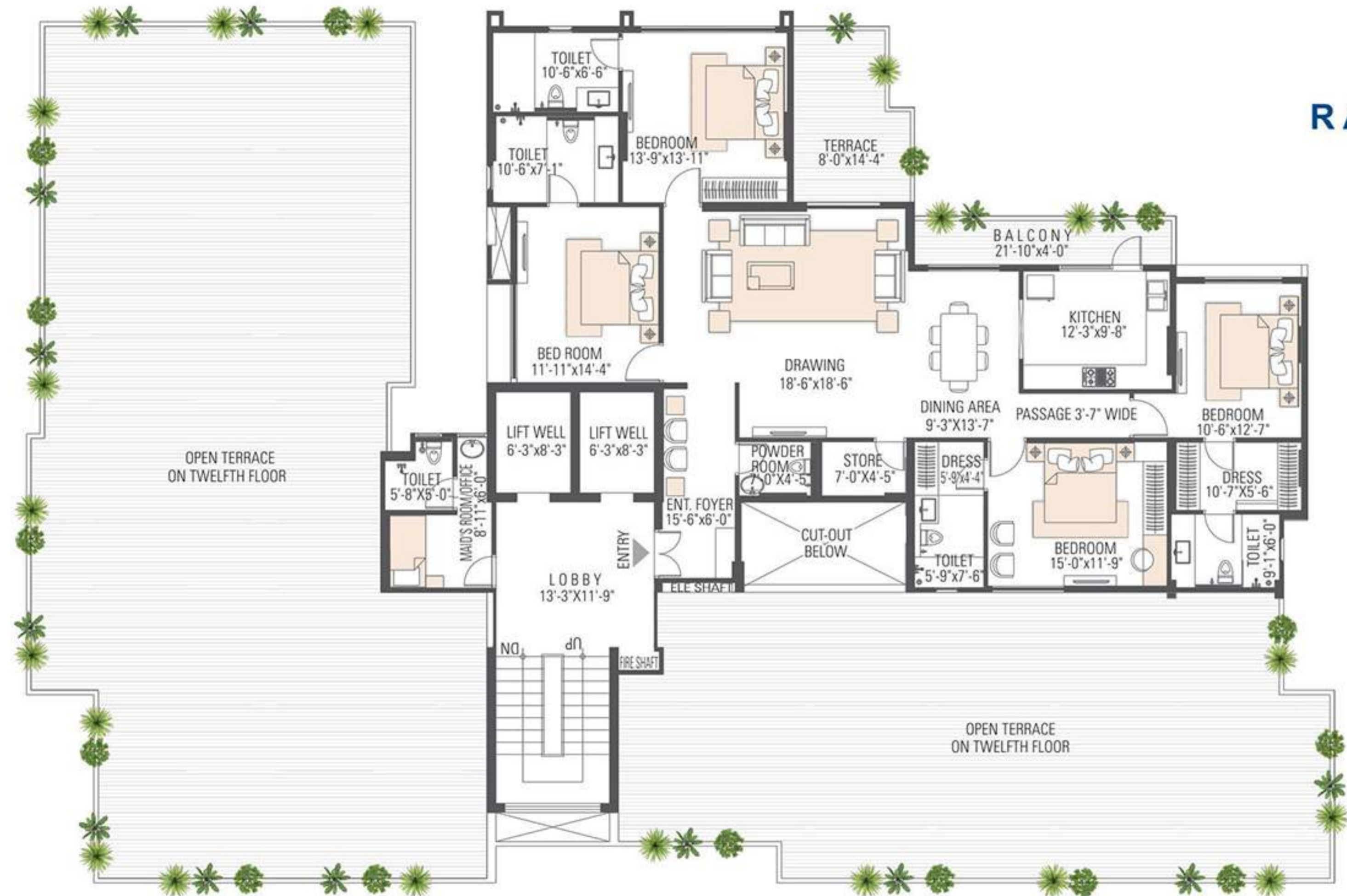
2 BHK - BLOCK B



**4 BHK - BLOCK B
DUPLEX**

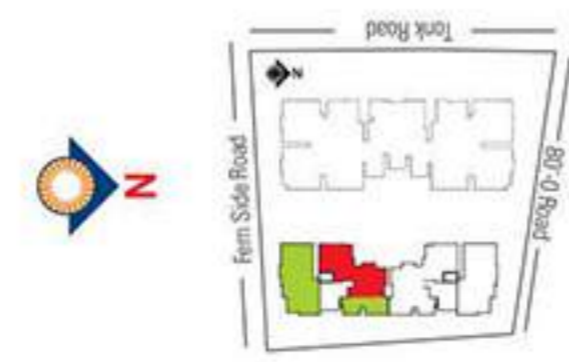
TENTH & ELEVENTH FLOOR

SBUA - 3055 sq.ft.
Carpet Area- 1898 Sq.ft.
Built-up Area- 2291 Sq.ft.
Balcony Area-264 Sq.ft.



TWELFTH TO SEVENTEENTH FLOOR
 SBUA - 3123 sq.ft. | Carpet Area- 1968 Sq.ft.
 Built-up Area- 2342 Sq.ft. | Balcony Area-219 Sq.ft.
 TERRACE AREA 3606 Sq.ft. (on Twelfth Floor)

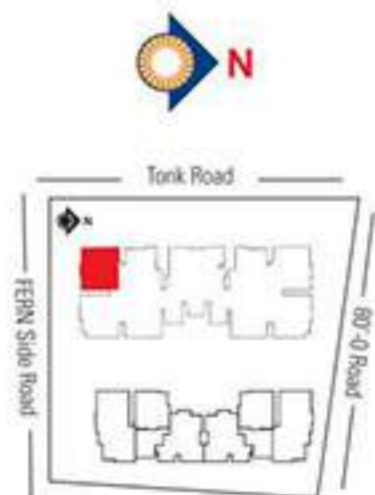
4 BHK - BLOCK B





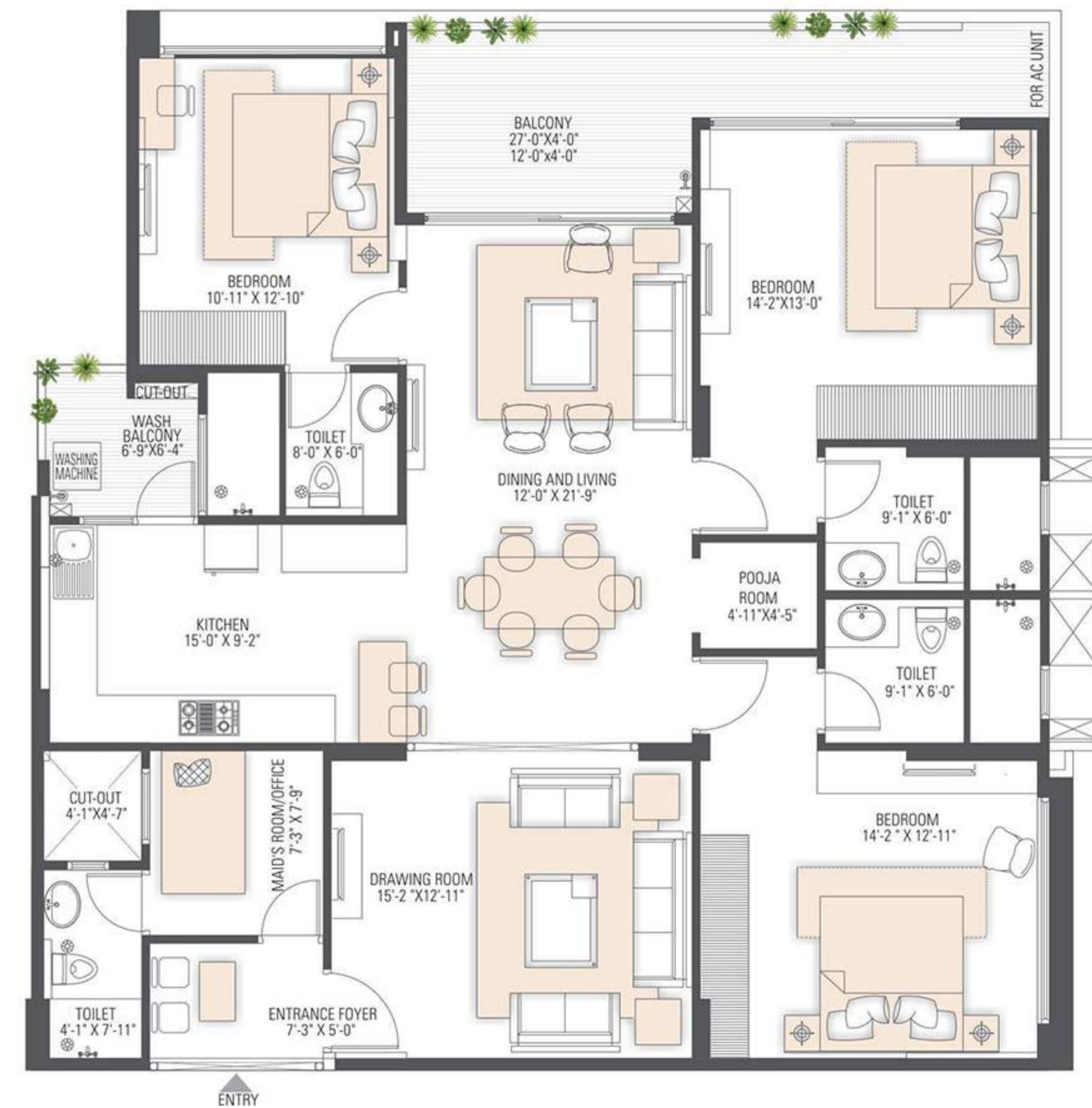
FIRST TO TENTH FLOOR
 SBUA - 2381 sq.ft.
 Carpet Area- 1500 Sq.ft.
 Built up Area- 1786 Sq.ft.
 Balcony Area-195 Sq.ft.

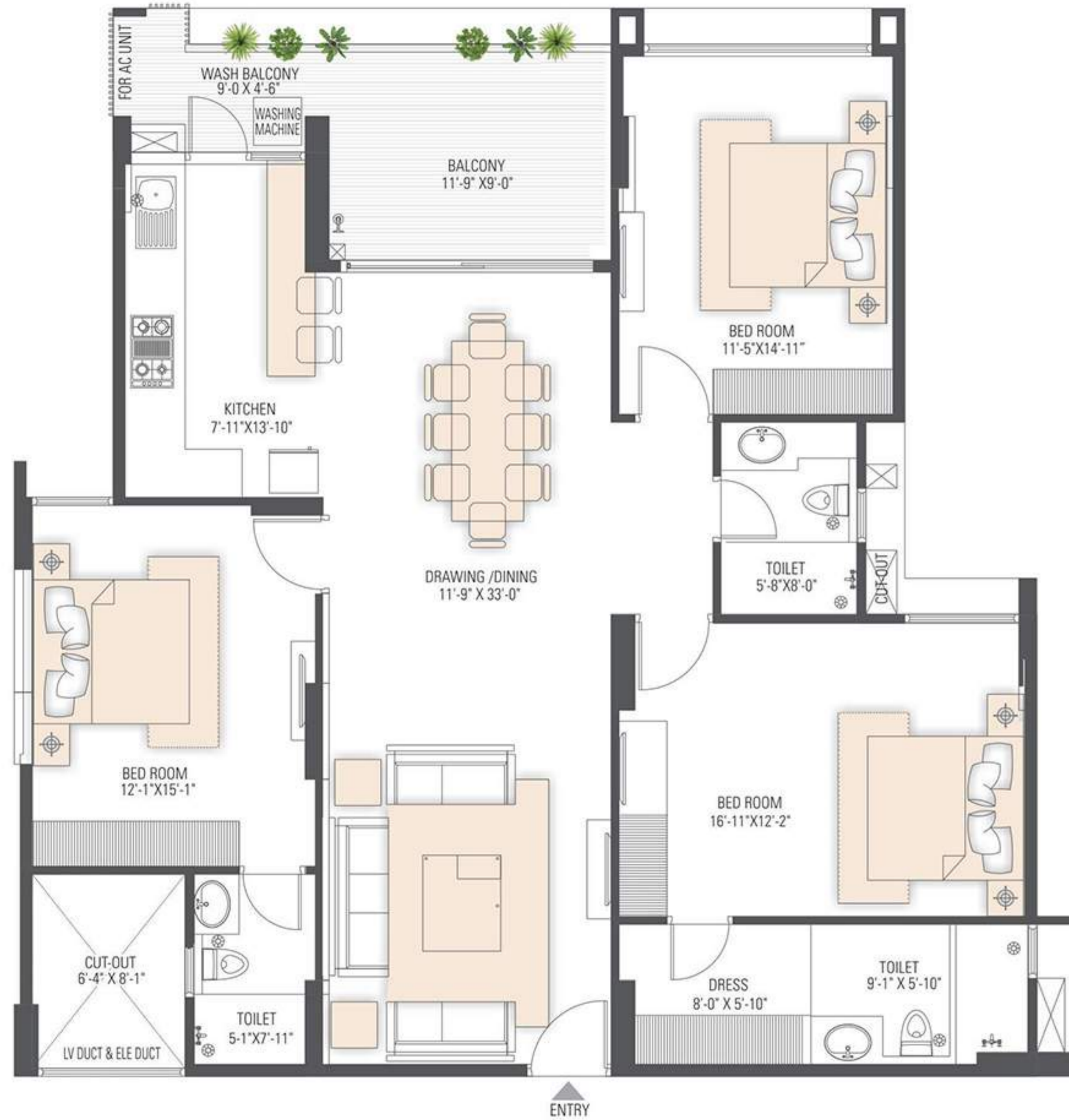
3 BHK - BLOCK C



FIRST TO ELEVENTH FLOOR
 SBUA - 2381 sq.ft.
 Carpet Area- 1500 Sq.ft.
 Built up Area - 1786 Sq.ft.
 Balcony Area-195 Sq.ft.

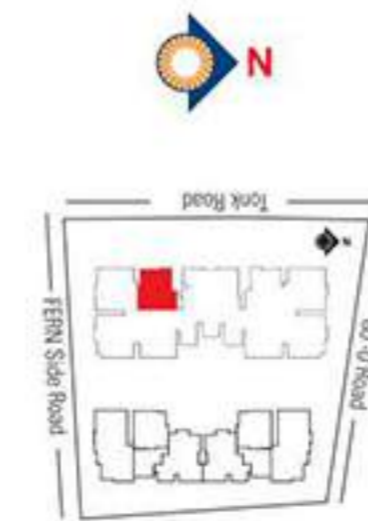
3 BHK - BLOCK C





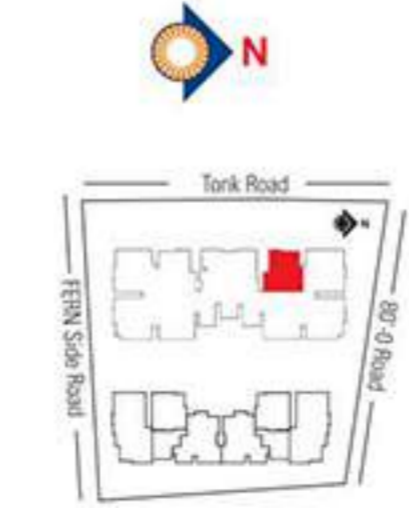
FIRST TO THIRTEEN FLOOR
 SBUA - 2068 sq.ft.
 Carpet Area- 1315 Sq.ft.
 Built-up Area- 1551 Sq.ft.
 Balcony Area-151 Sq.ft.

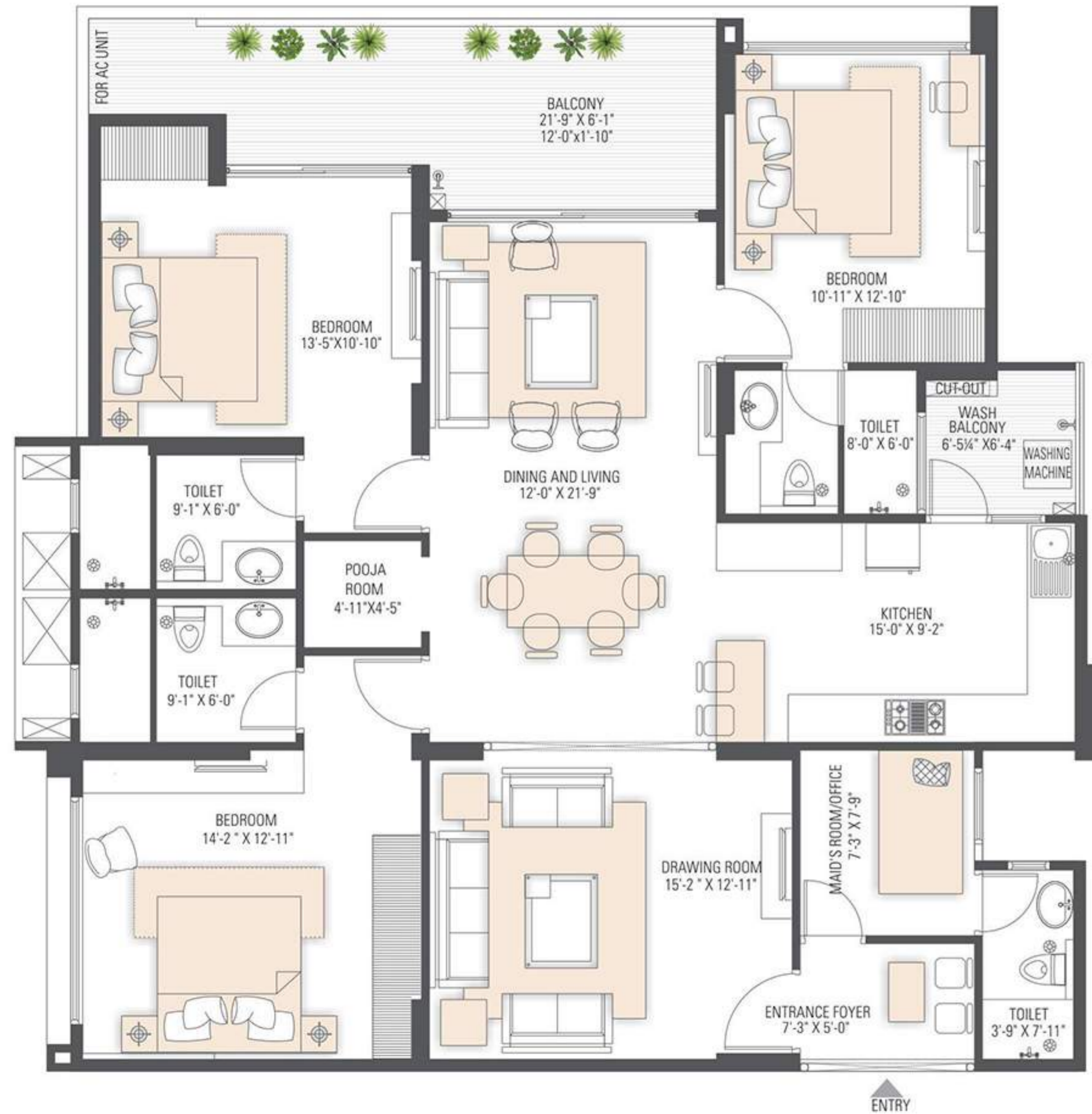
3 BHK - BLOCK C



FIRST TO TWELFTH FLOOR
 SBUA - 2068 sq.ft.
 Carpet Area- 1315 Sq.ft.
 Built-up Area- 1551 Sq.ft.
 Balcony Area-151 Sq.ft.

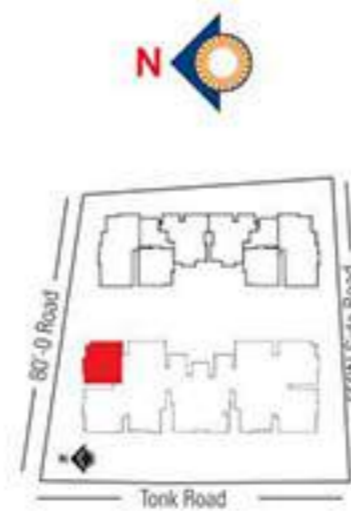
3 BHK - BLOCK C





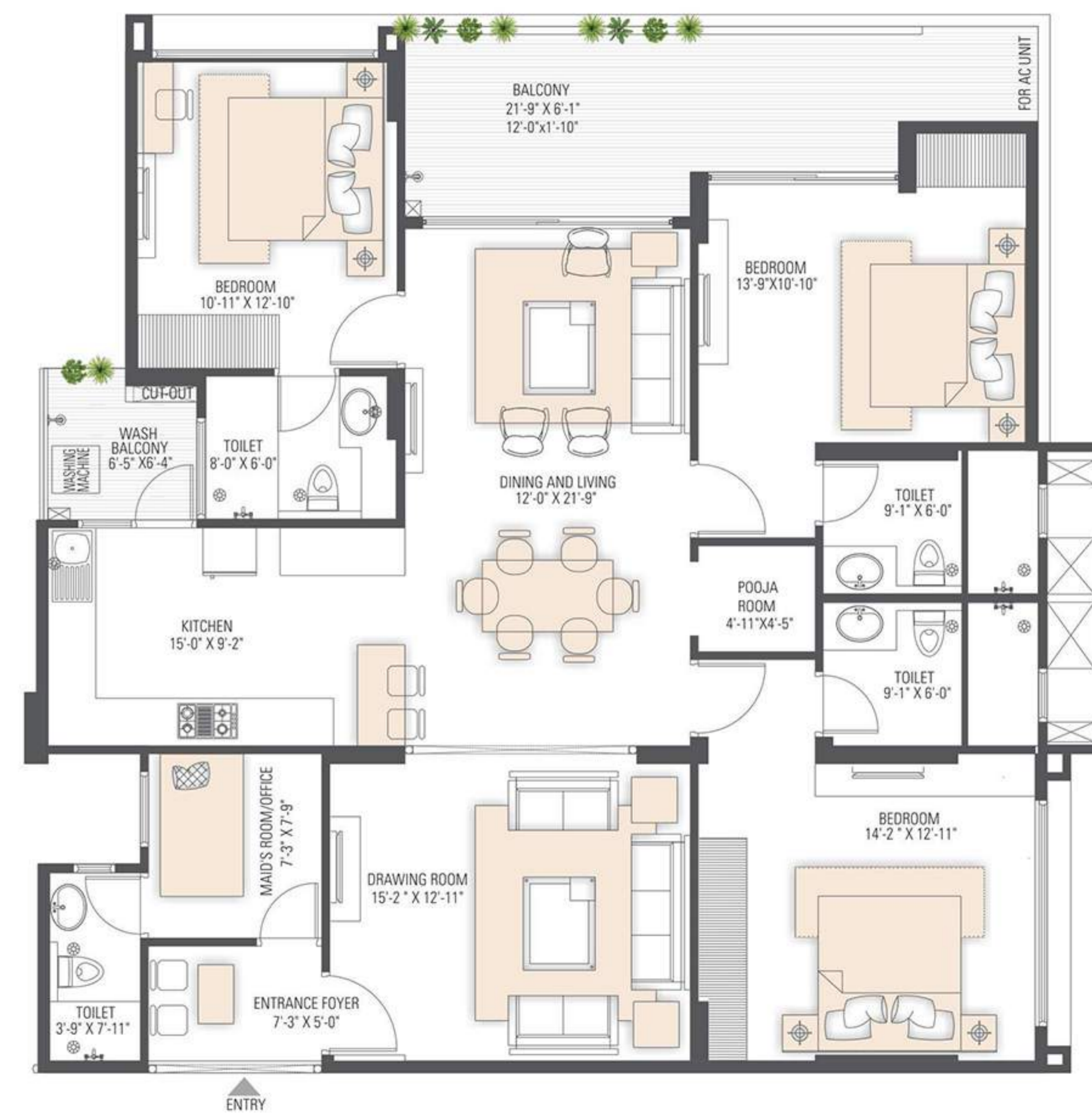
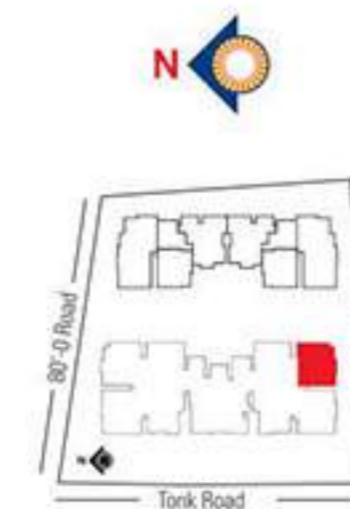
FIRST TO ELEVENTH FLOOR
SBUA - 2353 sq.ft.
Carpet Area- 1469 Sq.ft.
Built-up Area- 1765 Sq.ft.
Balcony Area-208 Sq.ft.

3 BHK - BLOCK C



FIRST TO TENTH FLOOR
SBUA - 2362 sq.ft.
Carpet Area- 1474 Sq.ft.
Built-up Area- 1771 Sq.ft.
Balcony Area-210 Sq.ft.

3 BHK - BLOCK C

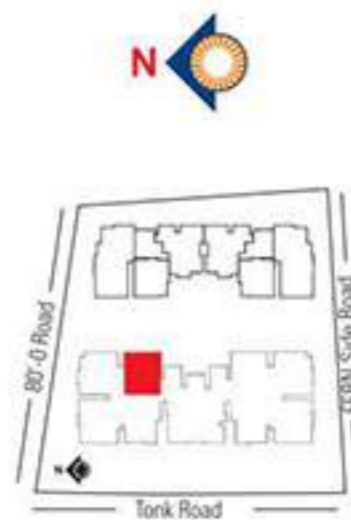




FIRST TO TWELFTH FLOOR

SBUA - 2401 sq.ft.
 Carpet Area- 1513 Sq.ft.
 Builtup Area- 1801 Sq.ft.
 Balcony Area-195.00 Sq.ft.

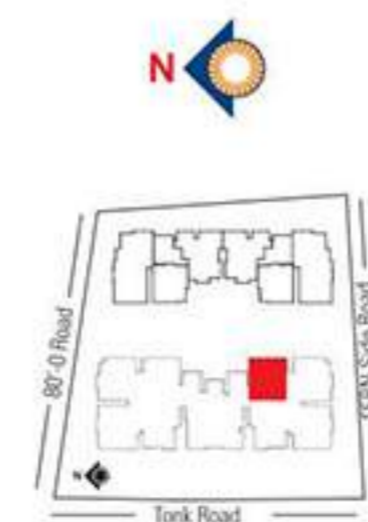
3 BHK - BLOCK C

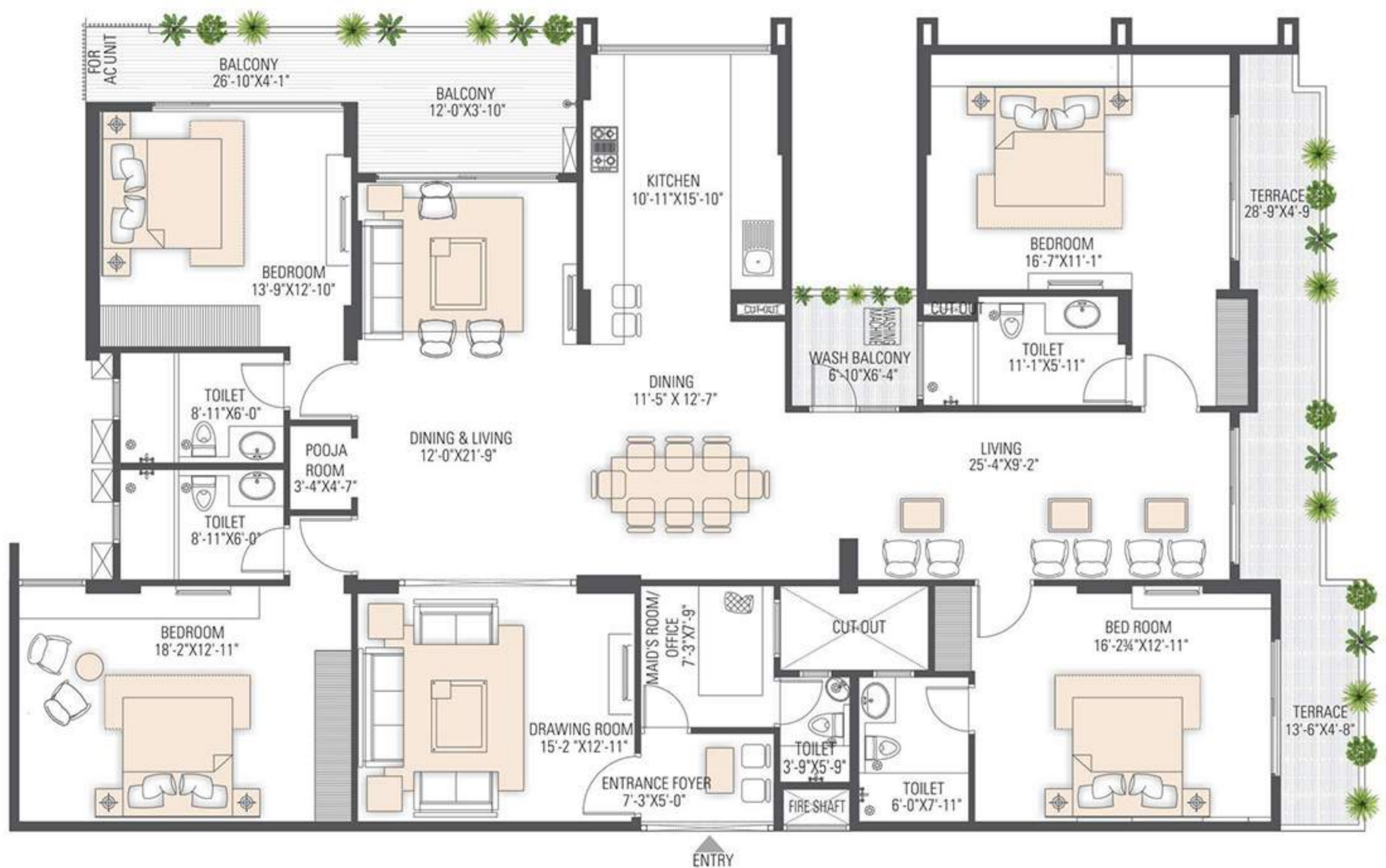


FIRST TO THIRTEEN FLOOR

SBUA - 2401 sq.ft.
 Carpet Area- 1513 Sq.ft.
 Builtup Area- 1801 Sq.ft.
 Balcony Area-195.00 Sq.ft.

3 BHK - BLOCK C

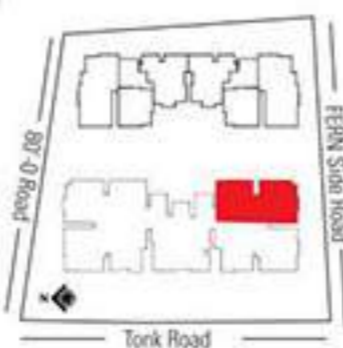




4 BHK - BLOCK C

THIRTEEN FLOOR

SBUA - 3577 sq.ft.
Carpet Area- 2345 Sq.ft. | Built-up Area- 2683 Sq.ft.
Balcony Area- 202 Sq.ft. | Terrace Area - 193 Sq.ft.

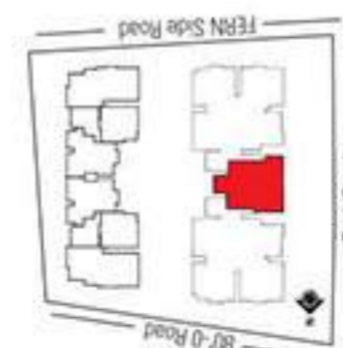


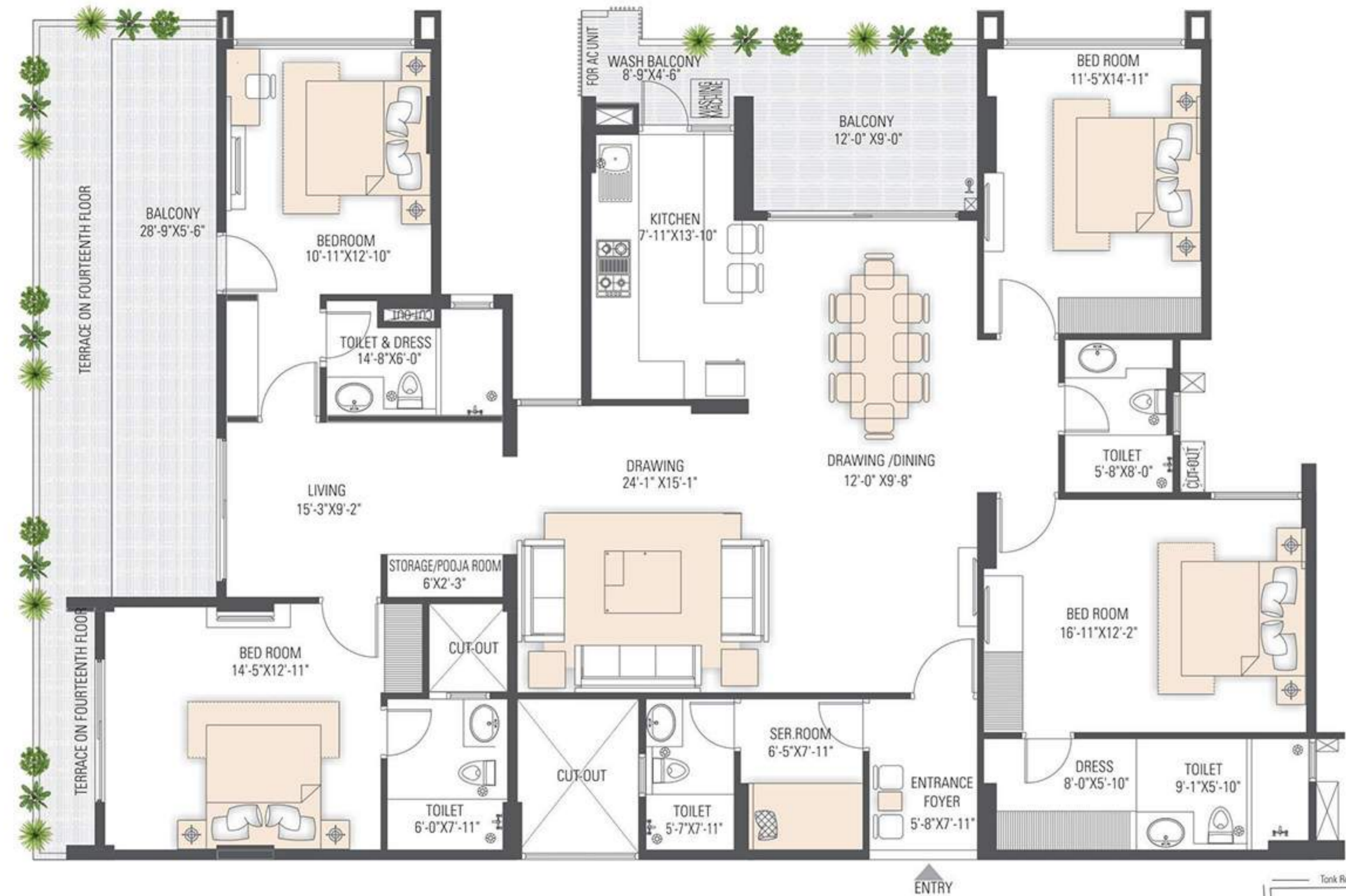
5 BHK - BLOCK C



FIRST TO SEVENTEEN FLOOR

SBUA - 4380 sq.ft.
Carpet Area- 2764 Sq.ft.
Built-up Area- 3285 Sq.ft.
Balcony Area- 389 Sq.ft.
Terrace Area - 340 Sq.ft. (on 2nd Floor)





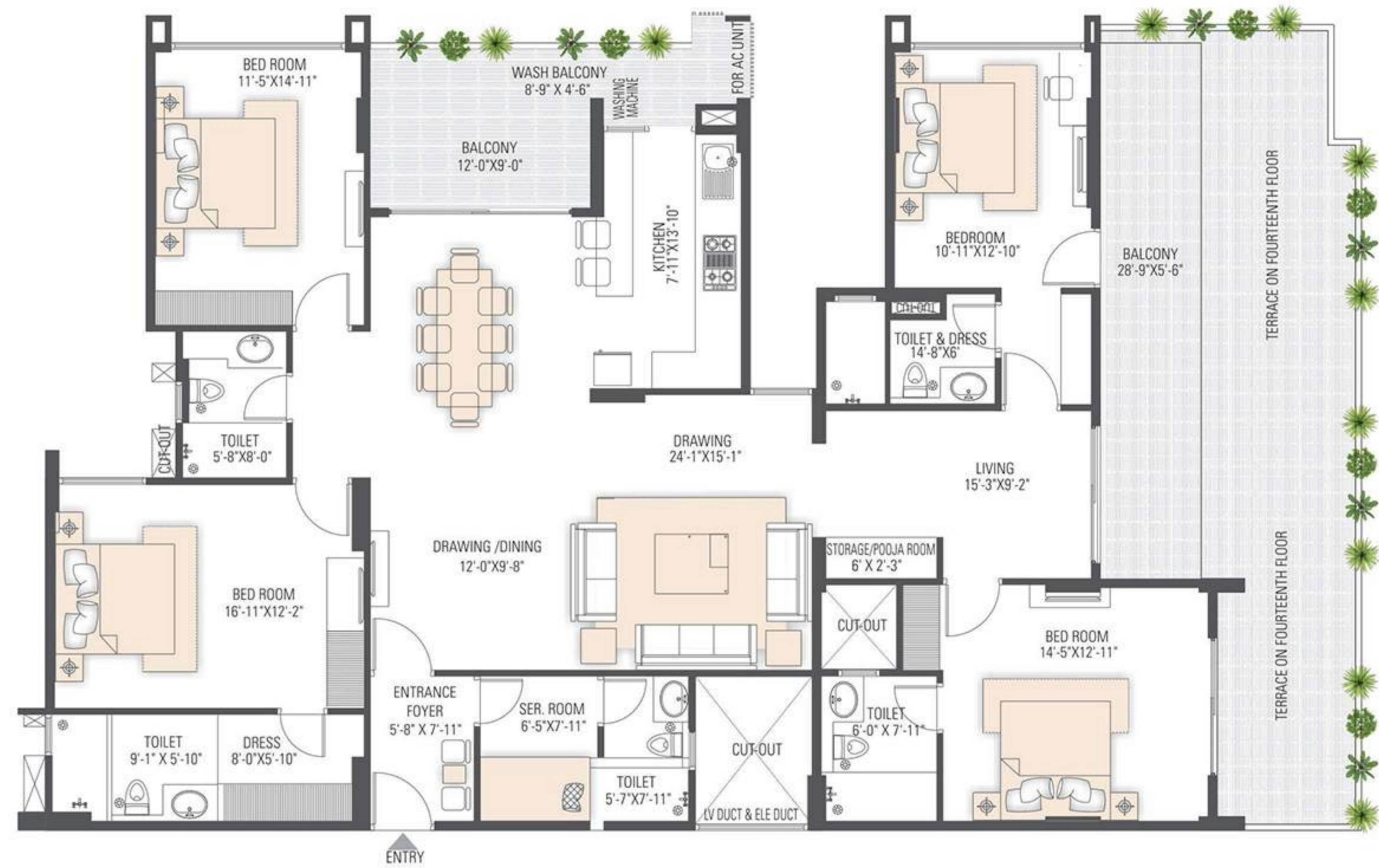
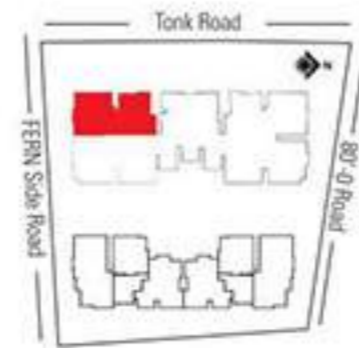
4 BHK - BLOCK C

FOURTEEN TO SEVENTEEN FLOOR

SBUA - 3196 sq.ft.

Carpet Area- 1941 Sq.ft. | Built-up Area- 2397 Sq.ft.

Balcony Area-312 Sq.ft. | Terrace Area-175 Sq.ft. (on 14th Floor)



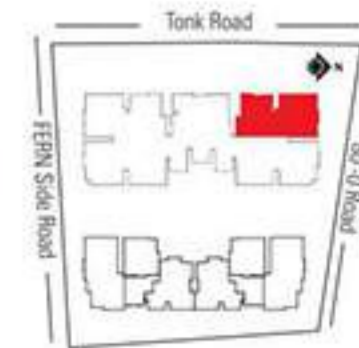
4 BHK - BLOCK C

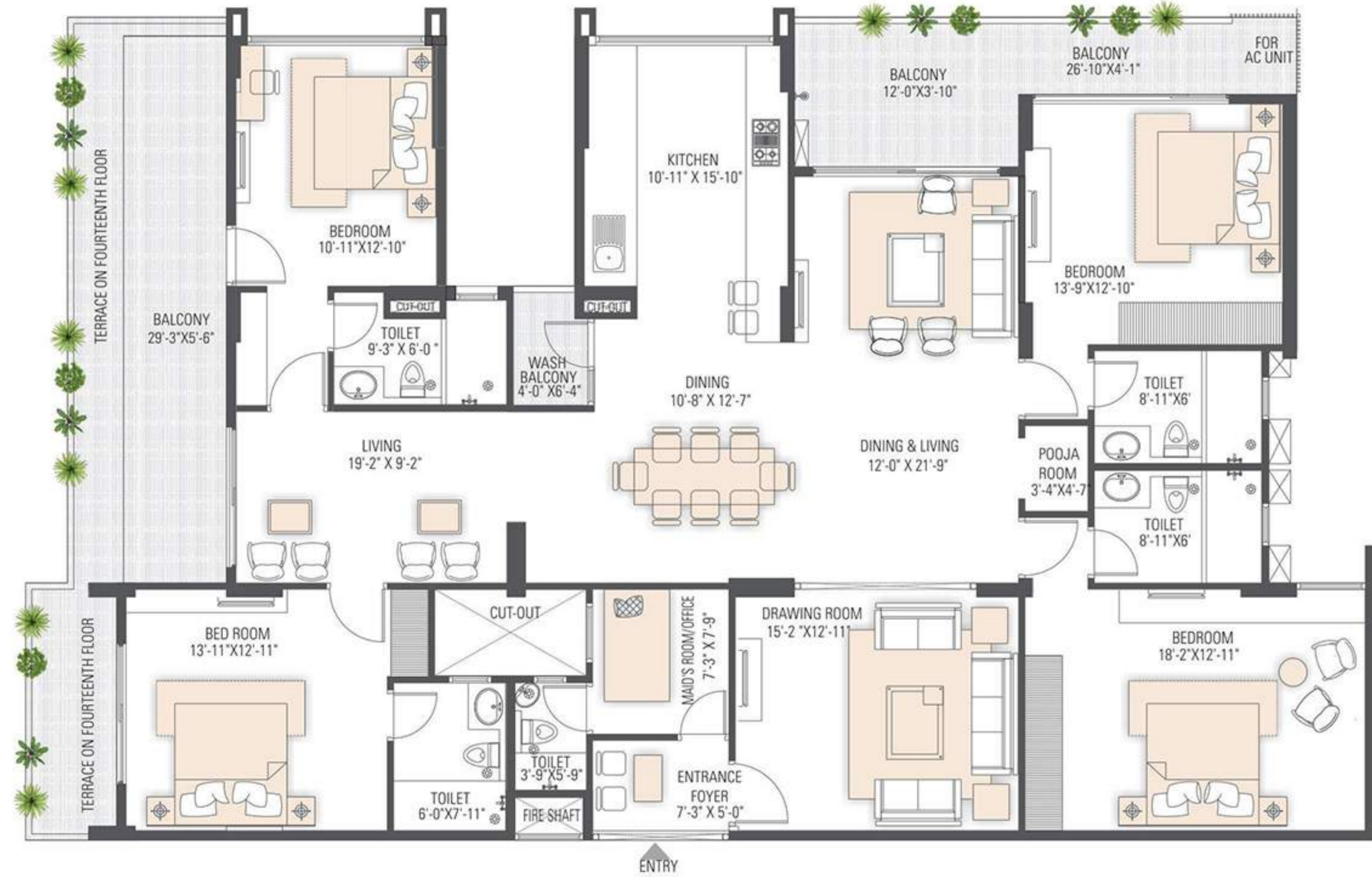
FOURTEEN TO SEVENTEEN FLOOR

SBUA - 3196 sq.ft.

Carpet Area- 1941 Sq.ft. | Built-up Area- 2397 Sq.ft.

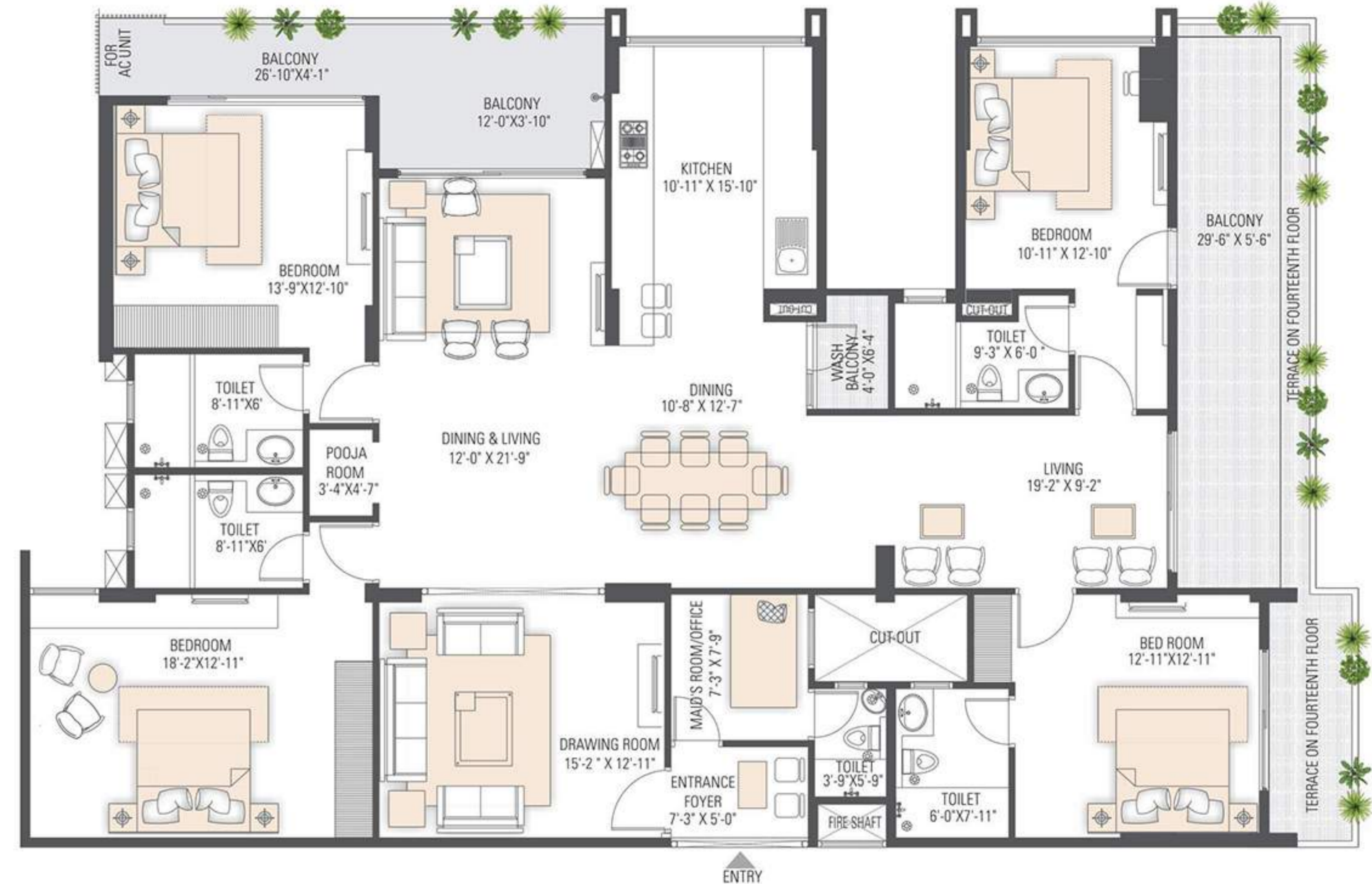
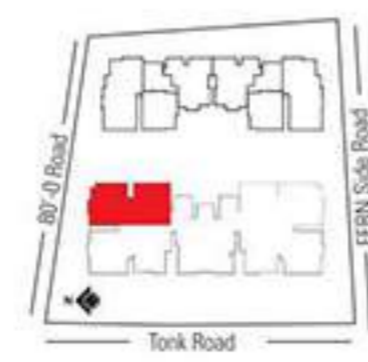
Balcony Area-312 Sq.ft. | Terrace Area-370 Sq.ft. (on 14th Floor)





4 BHK - BLOCK C

FOURTEEN TO SEVENTEEN FLOOR
 SBUA - 3509 sq.ft.
 Carpet Area- 2157 Sq.ft. | Built-up Area- 2632 Sq.ft.
 Balcony Area-343 Sq.ft. | Terrace Area-164 Sq.ft. (on 14th Floor)



4 BHK - BLOCK C

FOURTEEN TO SEVENTEEN FLOOR
 SBUA - 3492 sq.ft.
 Carpet Area- 2144 Sq.ft. | Built Area- 2619 Sq.ft.
 Balcony Area-343 Sq.ft. | Terrace Area-128 Sq.ft.





Manglam's
RADIANCE
ROYAL RESIDENCES



6TH FLOOR, APEX MALL, LAL KOTHI, TONK ROAD, JAIPUR-302015 (RAJASTHAN) Fax: 0141-4036320
www.manglamgroup.com | email : radiance@manglamgroup.com

For Booking : **0141-4311183**

www.rera.rajasthan.gov.in | RERA Registration No. **RAJ/P/2017/036**

Project Entity : M/s Nimrana Developers

Disclaimer: This printed material does not constitute any form of agreement and all the purchases shall solely be governed by the terms of the agreement for sale. All finishes are subject to change at the discretion of the Developer and / or the Architects. The images used in this brochure are for illustration purpose only whereas the rendered images are close to actual.